

SIRPG Antibody (Center)
Affinity Purified Rabbit Polyclonal Antibody (Pab)
Catalog # AP16636c**Specification**

SIRPG Antibody (Center) - Product Information

Application	WB,E
Primary Accession	O9P1W8
Other Accession	NP_543006.2 , NP_001034597.1
Reactivity	Human
Host	Rabbit
Clonality	Polyclonal
Isotype	Rabbit IgG
Calculated MW	42498
Antigen Region	193-221

SIRPG Antibody (Center) - Additional Information**Gene ID** 55423**Other Names**

Signal-regulatory protein gamma, SIRP-gamma, CD172 antigen-like family member B,
Signal-regulatory protein beta-2, SIRP-b2, SIRP-beta-2, CD172g, SIRPG, SIRPB2

Target/Specificity

This SIRPG antibody is generated from rabbits immunized with a KLH conjugated synthetic peptide between 193-221 amino acids from the Central region of human SIRPG.

Dilution

WB~~1:1000

E~~Use at an assay dependent concentration.

Format

Purified polyclonal antibody supplied in PBS with 0.09% (W/V) sodium azide. This antibody is purified through a protein A column, followed by peptide affinity purification.

Storage

Maintain refrigerated at 2-8°C for up to 2 weeks. For long term storage store at -20°C in small aliquots to prevent freeze-thaw cycles.

Precautions

SIRPG Antibody (Center) is for research use only and not for use in diagnostic or therapeutic procedures.

SIRPG Antibody (Center) - Protein Information**Name** SIRPG

Synonyms SIRPB2

Function Probable immunoglobulin-like cell surface receptor. On binding with CD47, mediates cell-cell adhesion. Engagement on T-cells by CD47 on antigen-presenting cells results in enhanced antigen-specific T-cell proliferation and costimulates T-cell activation.

Cellular Location

Membrane; Single-pass type I membrane protein

Tissue Location

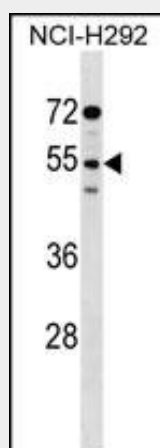
Detected in liver, and at very low levels in brain, heart, lung, pancreas, kidney, placenta and skeletal muscle. Expressed on CD4+ T-cells, CD8+ T-cells, CD56-bright natural killer (NK) cells, CD20+ cells, and all activated NK cells. Mainly present in the paracortical T-cell area of lymph nodes, with only sparse positive cells in the mantle and in the germinal center of B-cell follicles. In the thymus, primarily expressed in the medulla on mature T-lymphocytes that have undergone thymic selection.

SIRPG Antibody (Center) - Protocols

Provided below are standard protocols that you may find useful for product applications.

- [Western Blot](#)
- [Blocking Peptides](#)
- [Dot Blot](#)
- [Immunohistochemistry](#)
- [Immunofluorescence](#)
- [Immunoprecipitation](#)
- [Flow Cytometry](#)
- [Cell Culture](#)

SIRPG Antibody (Center) - Images



SIRPG Antibody (Center) (Cat. #AP16636c) western blot analysis in NCI-H292 cell line lysates (35ug/lane). This demonstrates the SIRPG antibody detected the SIRPG protein (arrow).

SIRPG Antibody (Center) - Background

The protein encoded by this gene is a member of the signal-regulatory protein (SIRP) family, and also belongs to the immunoglobulin superfamily. SIRP family members are receptor-type

transmembrane glycoproteins known to be involved in the negative regulation of receptor tyrosine kinase-coupled signaling processes. Alternatively spliced transcript variants encoding different isoforms have been described.

SIRPG Antibody (Center) - References

Barrett, J.C., et al. Nat. Genet. 41(6):703-707(2009)
Kawasaki, M., et al. Clin. Exp. Rheumatol. 27(2):260-266(2009)
Stefanidakis, M., et al. Blood 112(4):1280-1289(2008)
Lamesch, P., et al. Genomics 89(3):307-315(2007)
Barclay, A.N., et al. Nat. Rev. Immunol. 6(6):457-464(2006)